

# CERTIFICATE OF ANALYSIS

Order #: NA  
 Order Name: Flosom + CBD ( Saw Palmeto Oil Extract)  
 Batch #: 150620  
 Completed: 2-Jun-20

Dr Steve's  
 LLC. Davie, FL 33328

Sample: 1 Bottle of 30 Liquid Capsules

Sepecification: CBD 25 mg /Capsule



## Cannabinoids Test

Cannabinoids	Chemical	Weight (%)	mg/g	mg/Serving
DELTA-9-TETRAHYDROCANNABINOL	D9-THC	0.000%	0.00	0.00
TETRAHYDROCANNABINOLIC ACID	THCA	0.000%	0.00	0.00
CANNABIDIOL	CBD	3.924%	39.24	25.78
CANNABIDIOLIC ACID	CBDA	0.000%	0.00	0.00
CANNABIDIVARIN	CBDV	0.030%	0.30	0.20
CANNABICHROMENE	CBC	0.030%	0.30	0.20
CANNABINOL	CBN	0.020%	0.20	0.13
CANNABIGEROL	CBG	0.000%	0.00	0.00
CANNABIGEROLIC ACID	CBGA	0.030%	0.30	0.20
DELTA-8-TETRAHYDROCANNABINOL	D8-THC	0.000%	0.00	0.00
TETRAHYDROCANNABIVARIN	THCV	0.000%	0.00	0.00
TOTAL D9-THC*		0.000%	0.00	0.00
TOTAL CBD*		3.924%	39.24	25.78
TOTAL CANNABINOIDS		4.034%	40.34	26.50

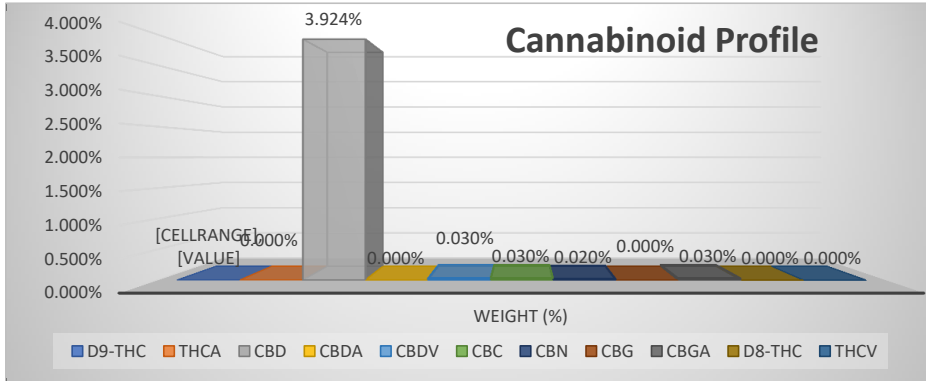
0.00 %  
D9-THC

39.24 mg/g  
Total CBD

Result: Total CBD 25.78 mg/cap

\*total THC is calculated by Delta9 THC +0.877xTHCA

\*total CBD is calculated by CBD + 0.877xCBDA



Liliana Lugo, Lab Director